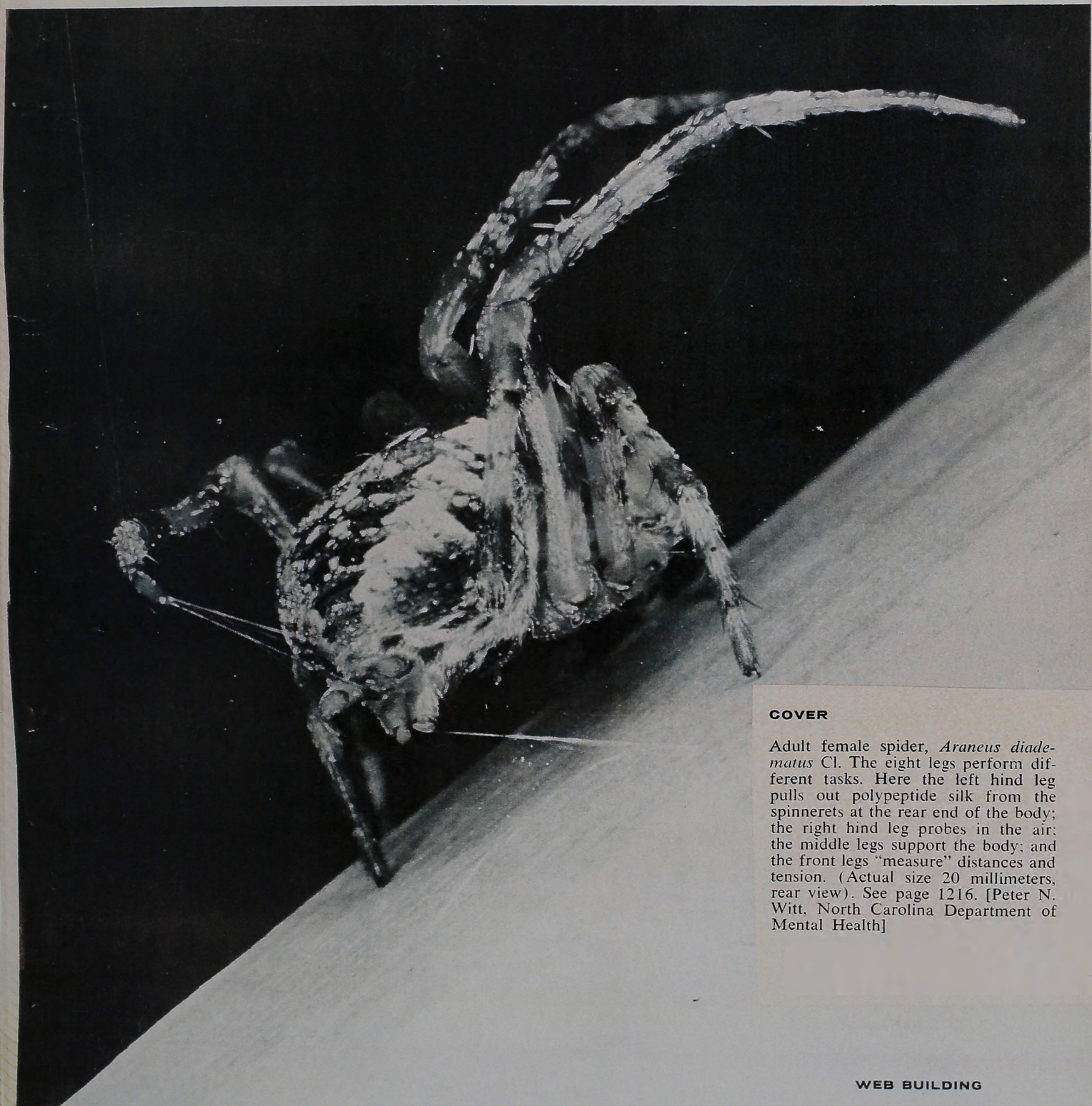


SCIENCE

1 December 1967

Vol. 158, No. 3805

AMERICAN ASSOCIATION FOR THE ADVANCEMENT OF SCIENCE



COVER

Adult female spider, *Araneus diadematus* Cl. The eight legs perform different tasks. Here the left hind leg pulls out polypeptide silk from the spinnerets at the rear end of the body; the right hind leg probes in the air; the middle legs support the body; and the front legs "measure" distances and tension. (Actual size 20 millimeters, rear view). See page 1216. [Peter N. Witt, North Carolina Department of Mental Health]

WEB BUILDING